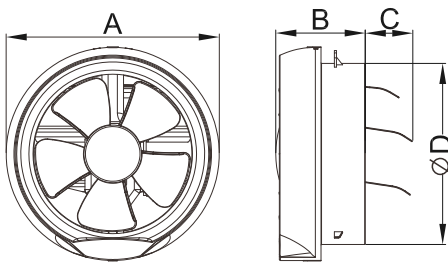


7. If the supply cord is damaged, it must be replaced by the manufacturer, its service agent or similarly qualified persons in order to avoid a hazard.
8. The fan should be installed at 2.3m above the ground.
9. When the ventilating fan is connected with the power circuit, all-polarity switch with at least 3mm contact gap must be in the charging line. Green and Yellow color wire of power supply should be earthed.
10. Precautions must be taken to avoid the back-flow of gases into the room from the open flue of gas or other fuel-burning appliances.
11. This product is not intended for use by persons (including children) with reduced Physical, sensory or mental capabilities, or lack of experience and knowledge, unless they have been given supervision or instruction concerning use of the appliance by a person responsible for their safety. Children should be supervised to ensure that they do not play with the appliance.
12. Ensure that the fan is switched off from the supply mains before removing the guard.
13. This appliance can be used by children aged from 8 years and above and persons with reduced physical, sensory or mental capabilities or lack of experience and knowledge if they have been given supervision or instruction concerning use of the appliance in a safe way and understand the hazards involved. Children shall not play with the appliance. Cleaning and user maintenance shall not be made by children without supervision.

SPECIFICATIONS

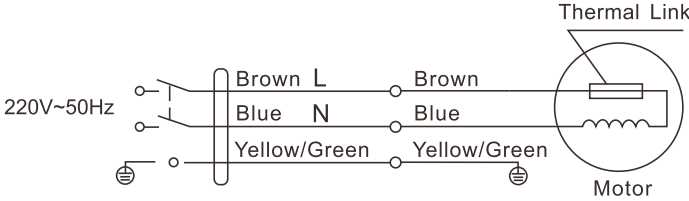
Model	Size (in/mm)	Volt (V)	Freq (Hz)	Input Power (W)	Air Volume (m³/min)	Noise dB(A)
C150	6/150	220	50	12	2.8	38

DIMENSIONS (mm)

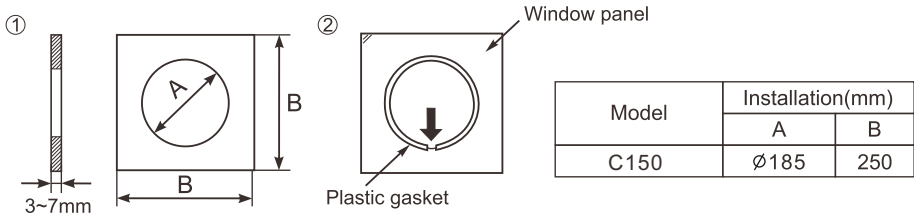


Model	A	B	C	D	Installation Space (mm)	Applicable Area (m²)
C150	206	87	46	176	∅ 185	8~12

WIRING DIAGRAM



INSTALLATION

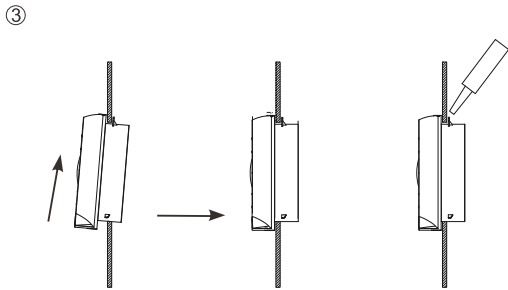


VENTILATION FAN

C150

Installation and Maintenance Instructions


THESE INSTRUCTIONS MUST BE READ FULLY BEFORE COMMENCING INSTALLATION




Insert the exhaust fan into the glass hole according to the drawing, rotate the main body to the normal position, and tighten the periphery with glass glue injection

MAINTENANCE

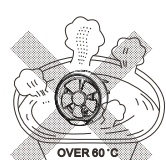
1. Confirm that the fan is turned off.



2. Never use petrol, benzene, thinner or any other such chemicals for cleaning the ventilating fan.

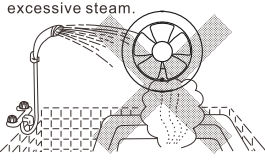


3. Do not immerse blades or other resign parts in hot water over 60°C.

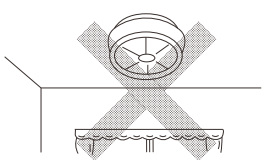


CAUTIONS

1. Do not install the fan where it is exposed directly to water or excessive steam.



2. Do not install the fan on the ceiling.



5. Do not install the fan near the cooking unit in a kitchen.

