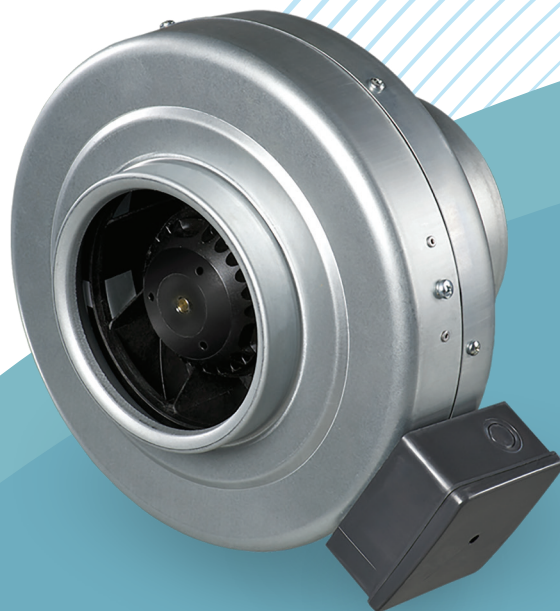


DCIF 100-315

(Inline Centrifugal Fan)

Air Capacity up to
1540 m³/h



Application

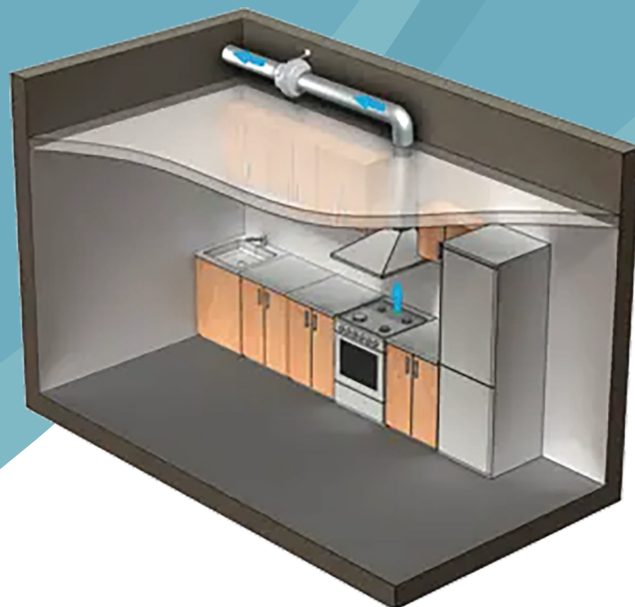
- Supply and exhaust ventilation systems for commercial, office and other public or industrial premises.
- For premises with high requirements to noise level we offer units in low-noise modification

Product Specifications

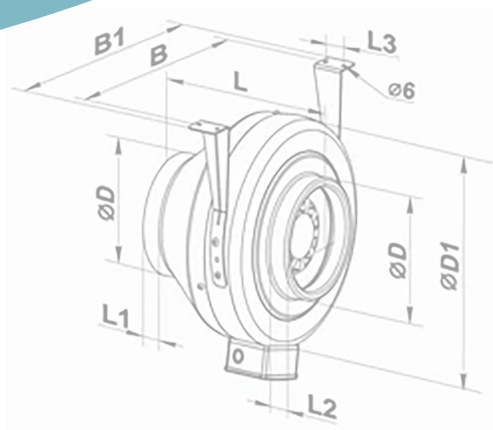
| | DCIF 100 | DCIF 125 | DCIF 150 | DCIF 200 | DCIF 315 |
|-----------------------------------|----------|----------|----------|----------|----------|
| Voltage [V / 50 Hz] | 230 | 230 | 230 | 230 | 230 |
| Power [W] | 72 | 78 | 75 | 157 | 185 |
| Current [A] | 0.32 | 0.34 | 0.33 | 0.69 | 0.81 |
| Max. air flow [m ³ /h] | 250 | 330 | 455 | 1000 | 1540 |
| RPM [min ⁻¹] | 2820 | 2820 | 2770 | 2740 | 2730 |
| Noise level at 3 m [dBA] | 46 | 46 | 46 | 50 | 53 |
| Max. operating temp. [°C] | -25 +55 | 30 | 30 | 20 | 20 |
| Protection rating | IP X4 | IP X4 | IP X4 | IP X4 | IP X4 |

Mounting

- Mounting at any angle to wall or ceiling is performed with fastening brackets supplied with the unit.
- The fan is powered by means of the external terminal box.
- Electric connection and mounting shall be performed in compliance with the manual and wiring diagram on the terminal box.



Dimensions



| | Model | | | | |
|-------------|----------|----------|----------|----------|----------|
| | DCIF 100 | DCIF 125 | DCIF 150 | DCIF 200 | DCIF 315 |
| D | 98 | 123 | 148 | 198 | 313 |
| D1 | 237 | 237 | 278 | 332 | 402 |
| B | 253 | 253 | 294 | 340 | 410 |
| B1 | 293 | 293 | 334 | 380 | 450 |
| L | 202 | 202 | 200 | 245 | 308 |
| L1 | 23 | 23 | 25 | 25 | 33 |
| L2 | 22 | 22 | 23 | 29 | 55 |
| L3 | 30 | 30 | 30 | 40 | 40 |
| [KG] | 3.2 | 3.15 | 3.8 | 4.4 | 5.7 |

Motor



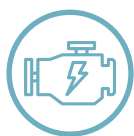
Overheating protection with automatic restart



Motor protection rating IP 44.



Dynamically balanced turbine for safe operation and low noise.



Motor is equipped with ball bearings which last for at least 40 000 hours.

Design



The fan casing is made of galvanized steel. For easy connection and operation the fan can be equipped with the power cord with a plug

External terminal box for power supply

Equipped with power cord