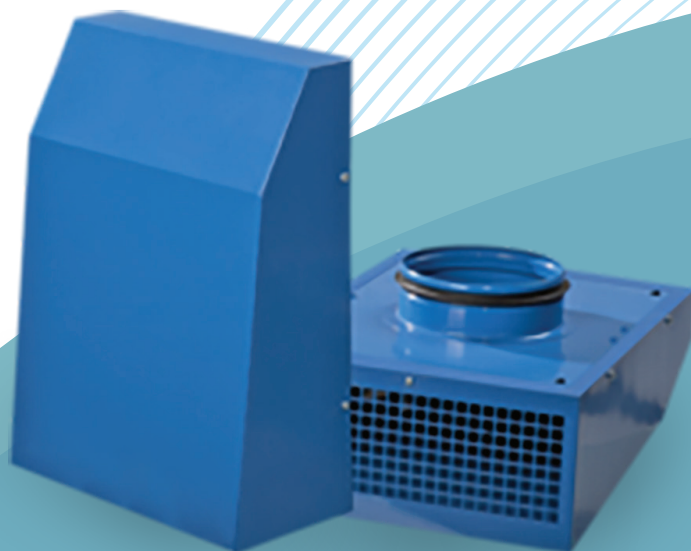


DCEF 100-200

SOUND INSULATED

(External Centrifugal Fans)

Air Capacity up to
710 m³/h



Application

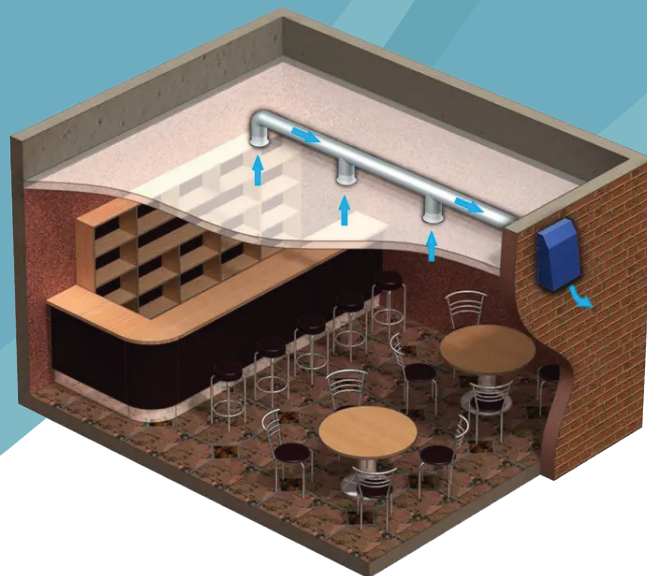
- Exhaust ventilation systems for commercial, office and other public or industrial premises for extraction of air with temperatures up to 55°C.
- Direct air exhaust is provided.

Product Specifications

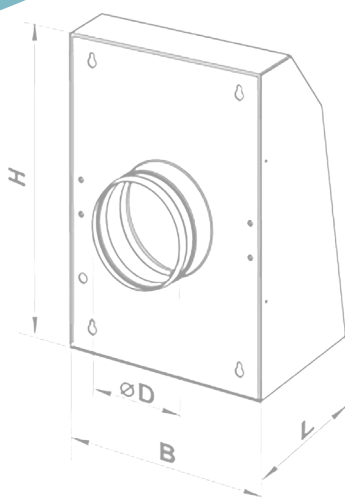
	DCEF 100	DCEF 125	DCEF 150	DCEF 160	DCEF 200
Voltage [V / 50 Hz]	230	230	230	230	230
Power [W]	58	60	100	102	104
Current [A]	0.26	0.27	0.43	0.44	0.45
Max. air flow [m ³ /h]	280	390	600	650	710
RPM [min ⁻¹]	2500	2500	2600	2600	2600
Noise level at 3 m [dBA]	54	54	58	60	62
Max. operating temp. [°C]	55	55	55	55	55
Protection rating	IP X4	IP X4	IP X4	IP X4	IP X4

Mounting

- The fan is designed for outdoor surface wall mounting and connection to round duct of the respective diameter.
- The fan is powered through the external terminals.
- Electric connection and mounting shall be performed in compliance with the manual and wiring diagram provided in unit operation manual.



Dimensions



Type	Dimensions [mm]				Mass [kg]
	D	B	H	L	
DCEF 100	99	260	355	138	4.1
DCEF 125	124	206	355	138	4.1
DCEF 150	149	300	400	138.2	4.5
DCEF 160	159	300	400	138.2	4.5
DCEF 200	199	300	400	138.2	4.5

Motor



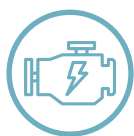
Overheating protection with automatic restart



Motor protection rating IP 44.



Dynamically balanced turbine for safe operation and low noise.



Motor is equipped with ball bearings which last for at least 40 000 hours.

Design



Steel casing with polymeric coating ensures motor protection against direct humidity exposure in case of the unit outdoor mounting

The fan bottom has a bird and rodent proof guard

Air is exhausted vertically down